



ALFA SRL

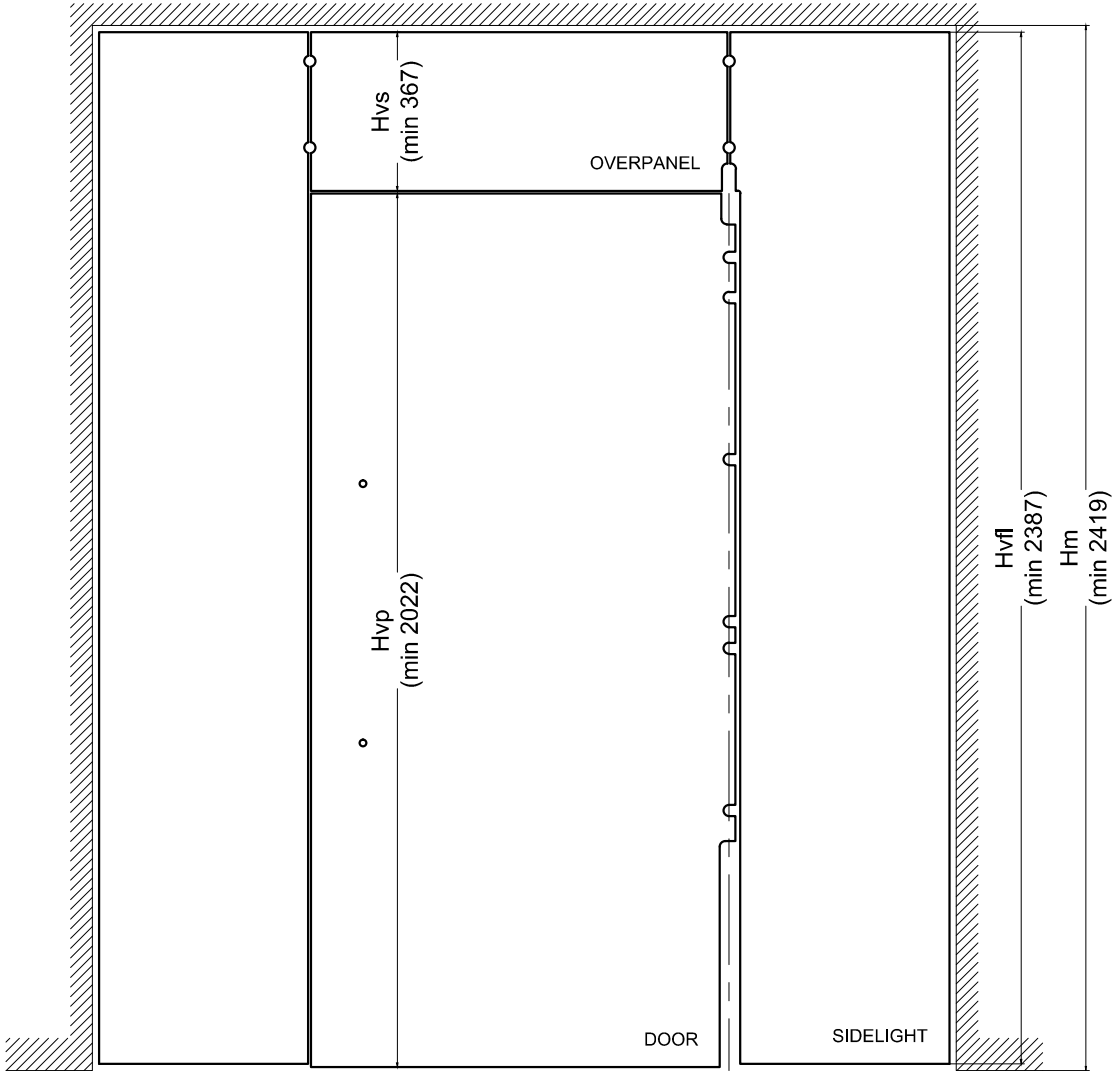
ZENITH D - TECHNICAL CATALOGUE

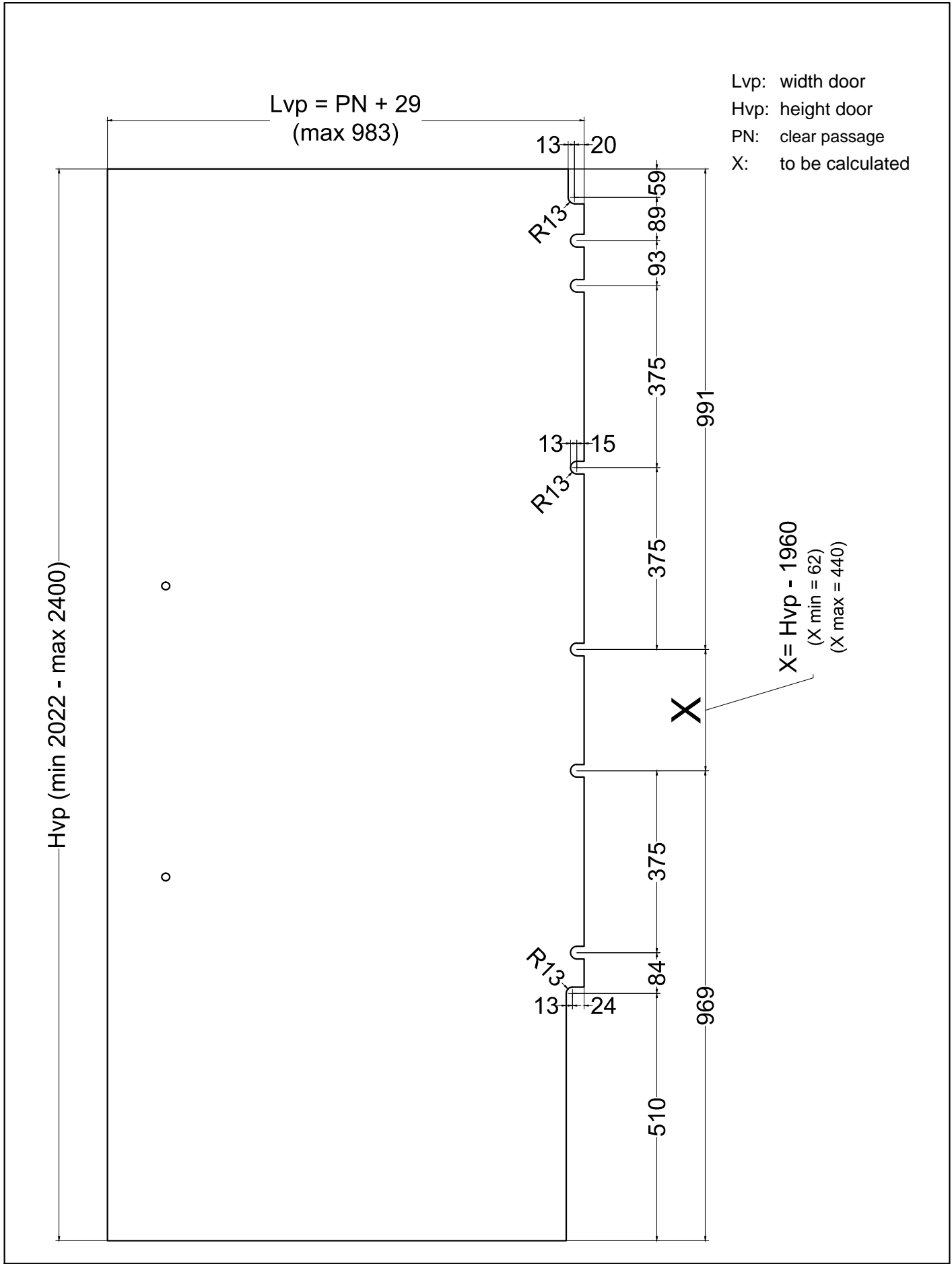
update 1.1
06/2011

CT.D5.00

- ZENITH D5 -
TECHNICAL CATALOGUE
GLASS DOOR WITH OVERPANEL AND SIDELIGHT

Hm: height wall
Hvp: height door
Hvs: height overpanel
Hvfl: height sidelight



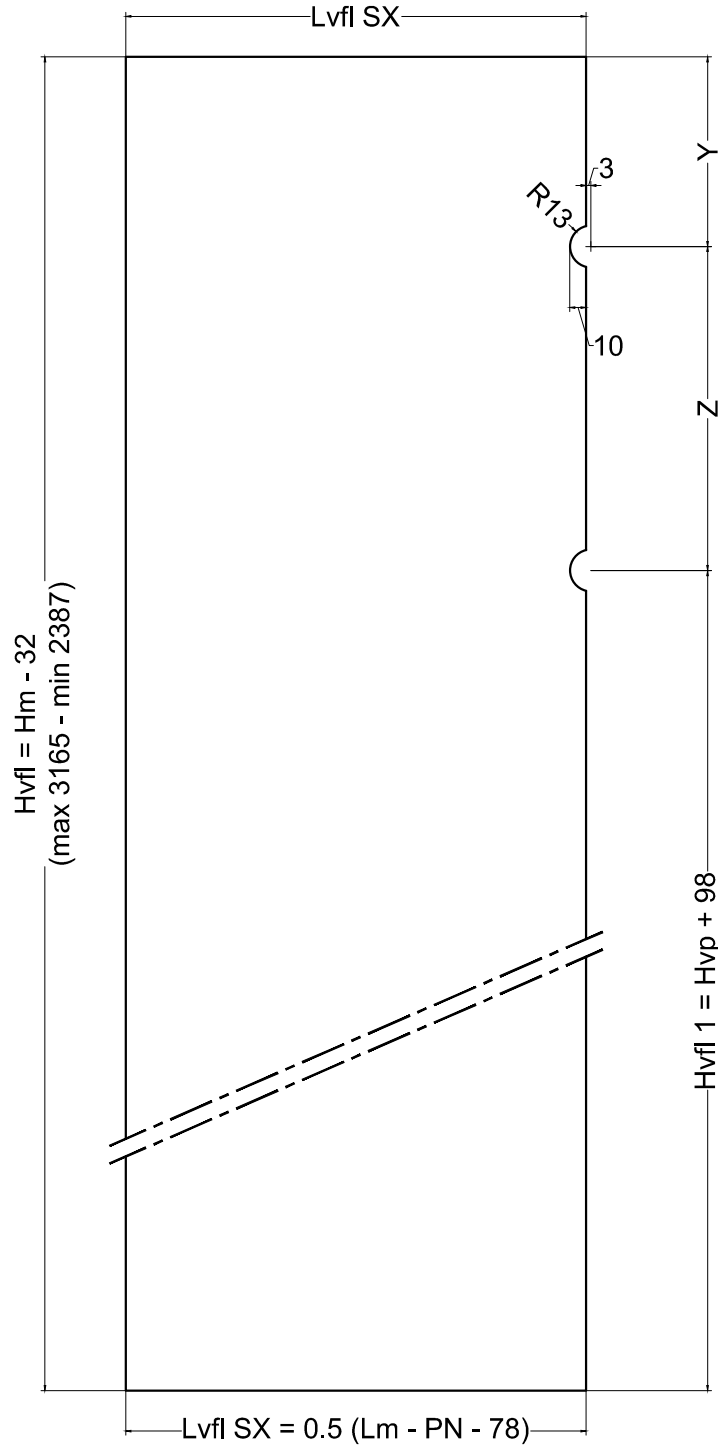


CT.D5.03	ZENITH D5 - WORKING GLASS DOOR
----------	--------------------------------

Lm: width wall
 Hm: height wall
 Hvp: height glass door
 PN: clear passage

Lvfl: width glass sidelight
 Hvfl: height glass sidelight right
 Hvfl1: height glass sidelight left

Y, Z = SEE CT.D5.04 - CT.D5.05



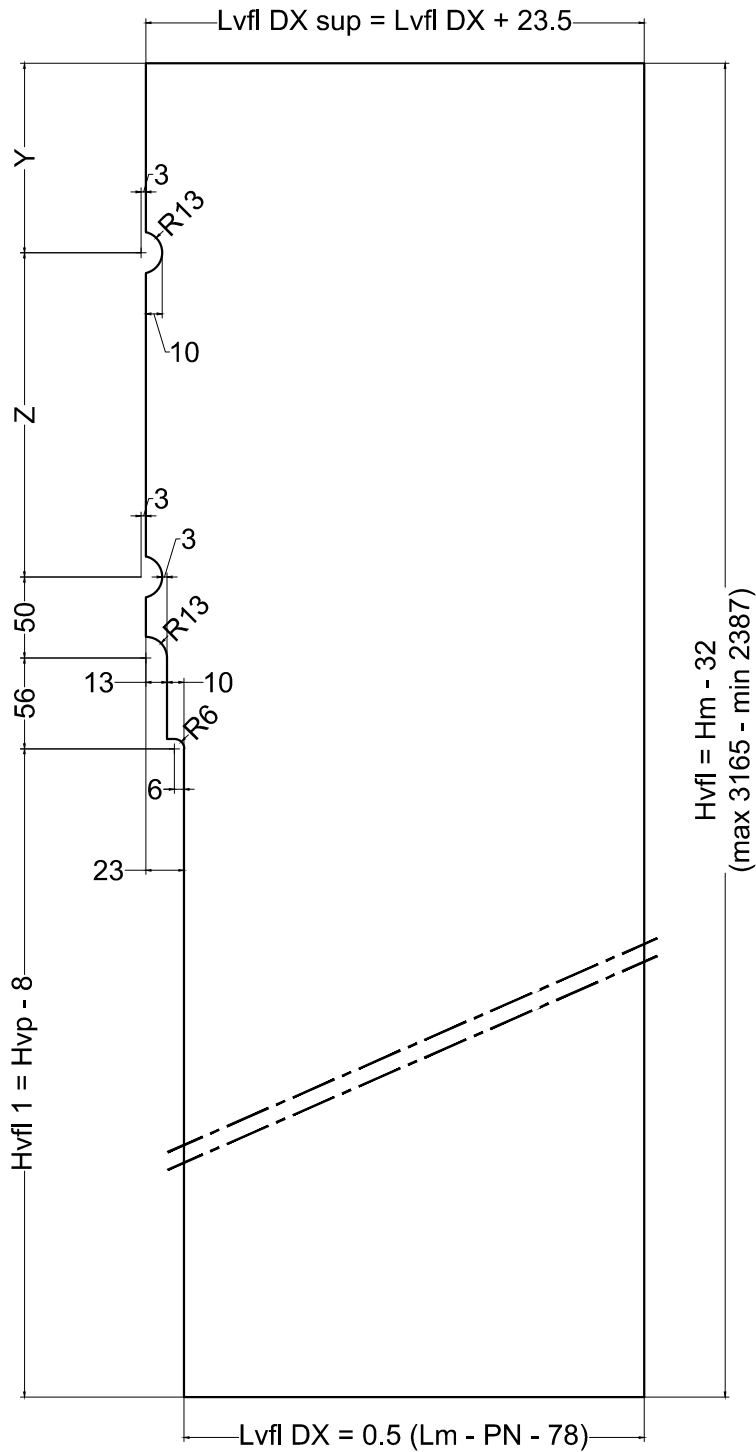
CT.D5.06

ZENITH D5 - WORKING GLASS SIDELIGHT

Lm: width wall
 Hm: height wall
 Hvp: height glass door
 PN: clear passage

Lvfl: width glass sidelight
 Hvfl: height glass sidelight right
 Hvfl1: height glass sidelight left

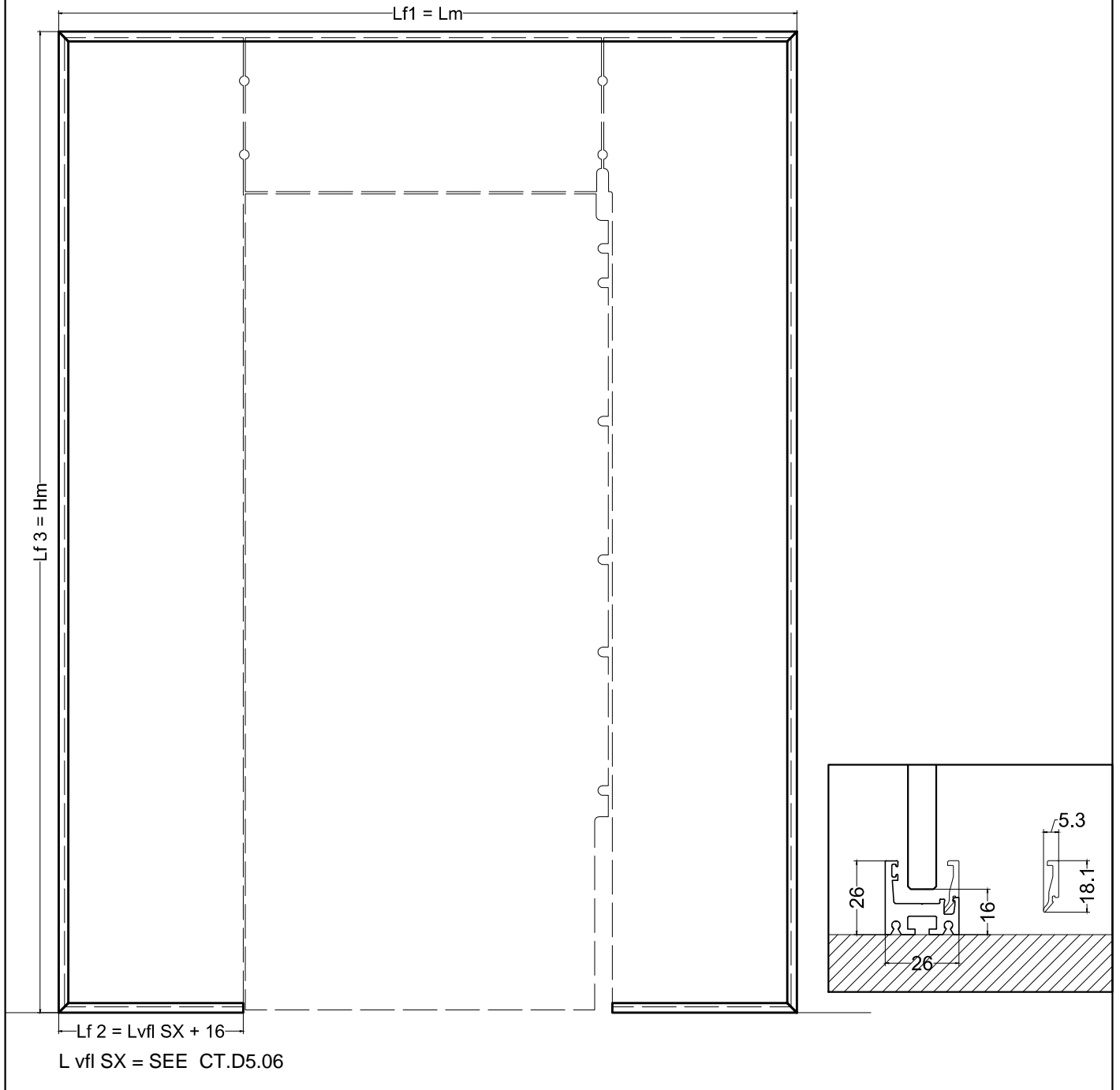
Y, Z = SEE CT.D5.04 - CT.D5.05



CT.D5.07

ZENITH D5 - WORKING GLASS SIDELIGHT

- Lf1: length top profile
- Lf2: length bottom profile
- Lf3: length side profile
- Lvfl: width glass sidelight
- Lm: width wall
- Hm: height wall

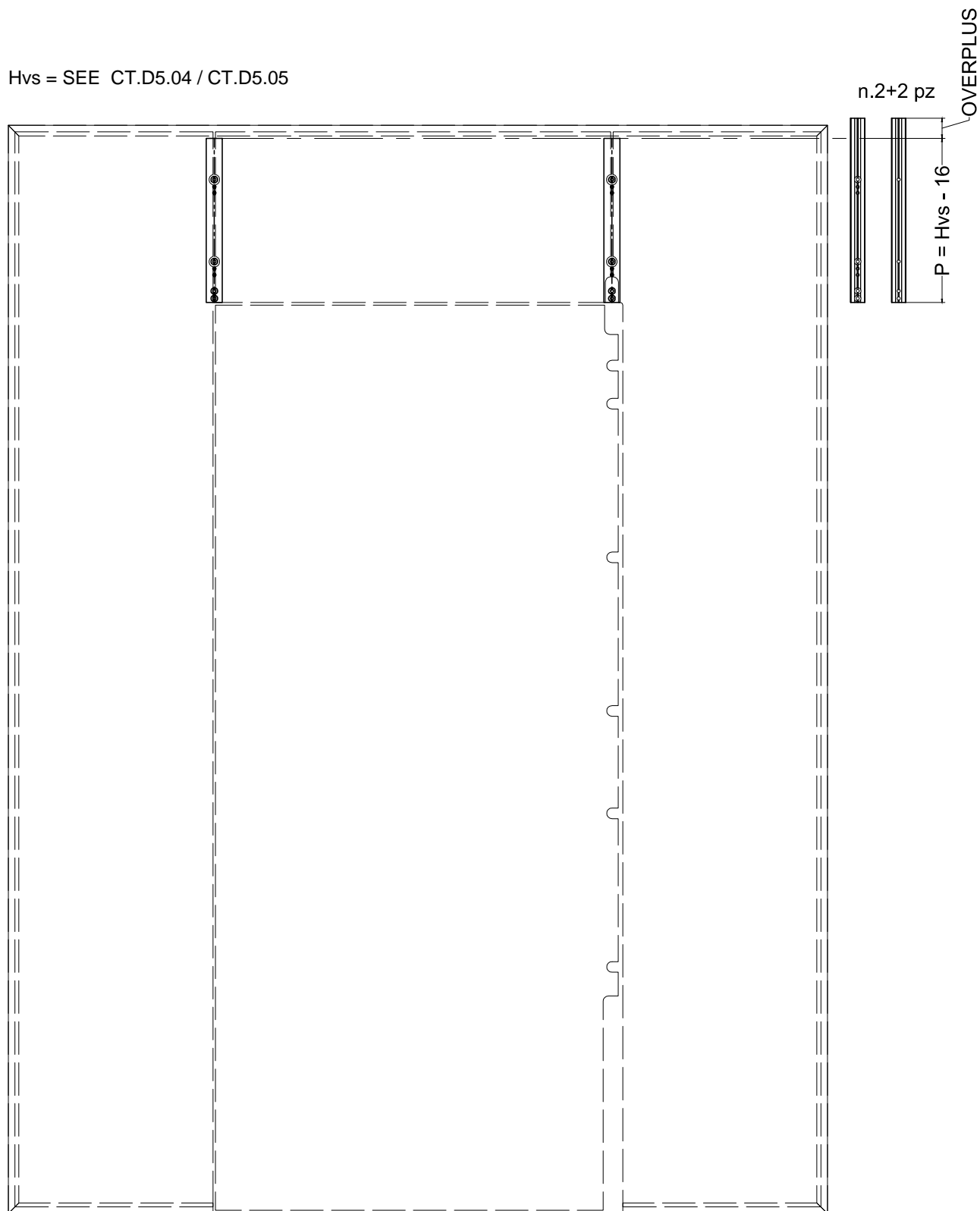


CT.D5.08

ZENITH D5 - CUTTING OF PROFILE FOR FIXED GLASS PANEL

P: length aluminium bar
Hvs: height glass overpanel

Hvs = SEE CT.D5.04 / CT.D5.05

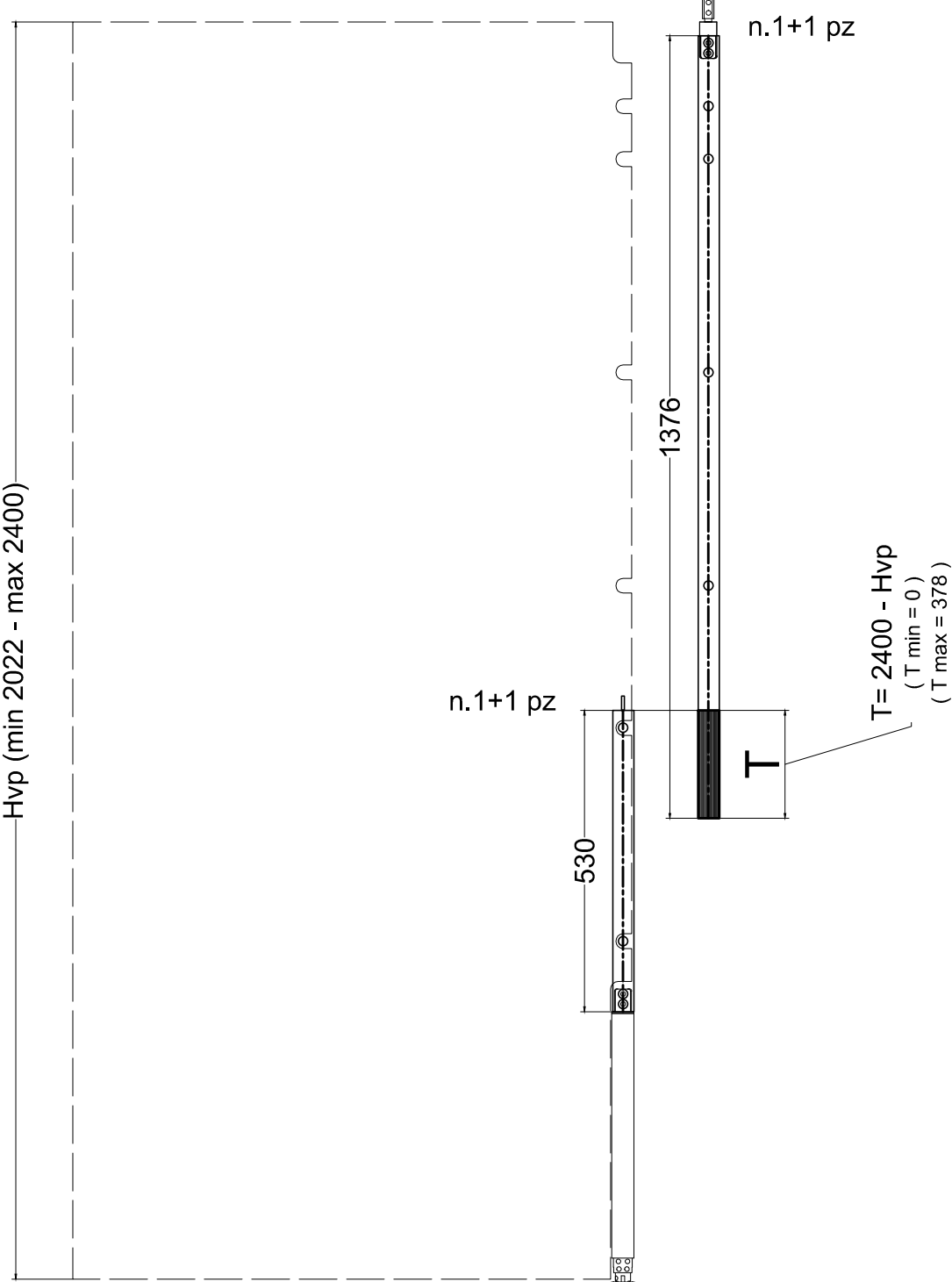


CT.D5.09

ZENITH D5 - CUTTING ALUMINIUM BAR

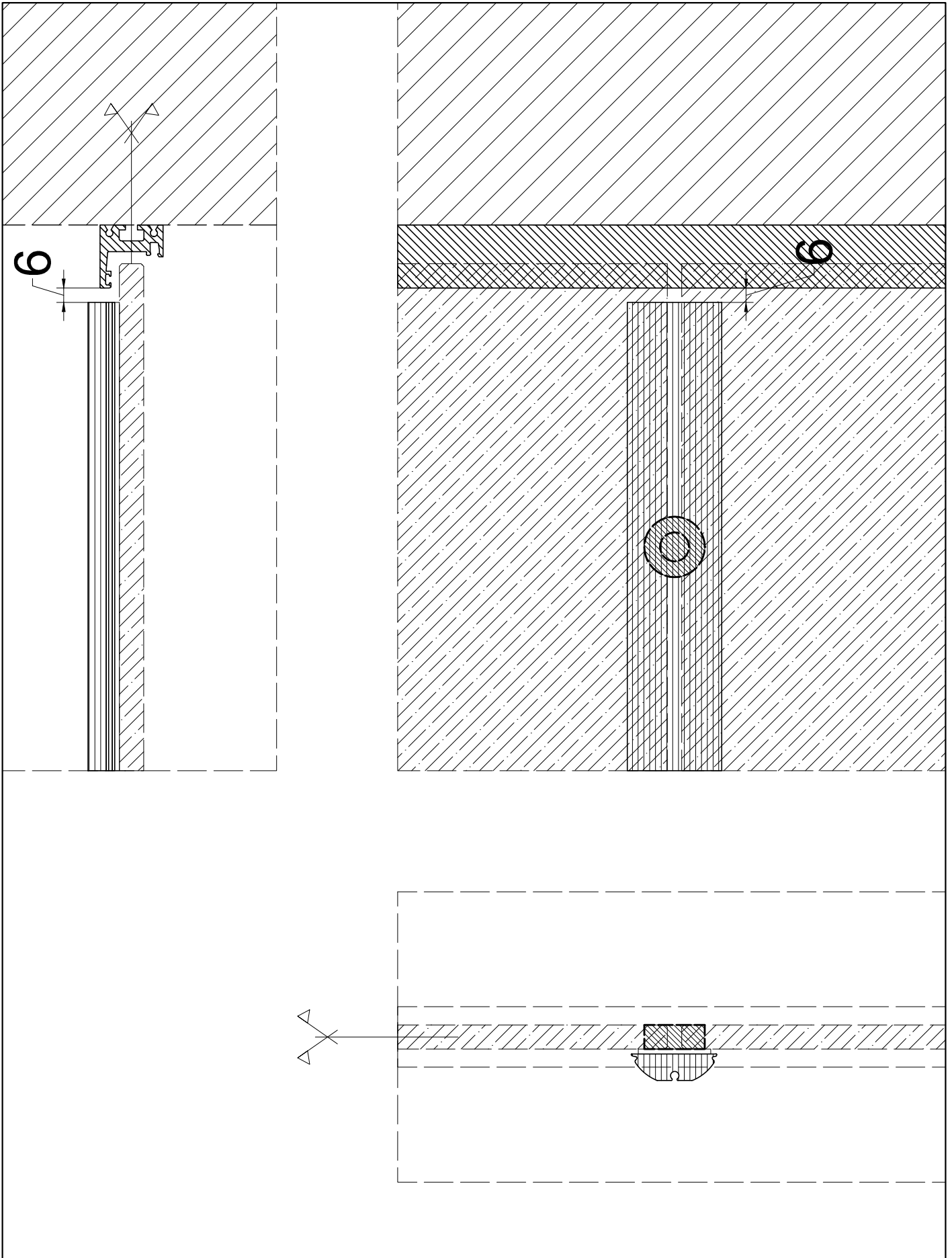
Hvp: height glass door

T: cutting alum. bar



CT.D5.10

ZENITH D5 - CUTTING ALUMINIUM BAR



CT.D5.11

ZENITH D5 - INSTRUCTION TO INSTALL ALUMINIUM BAR AND BRACKETS