



ALFA SRL

ZENITH SC - INSTALLATION INSTRUCTIONS

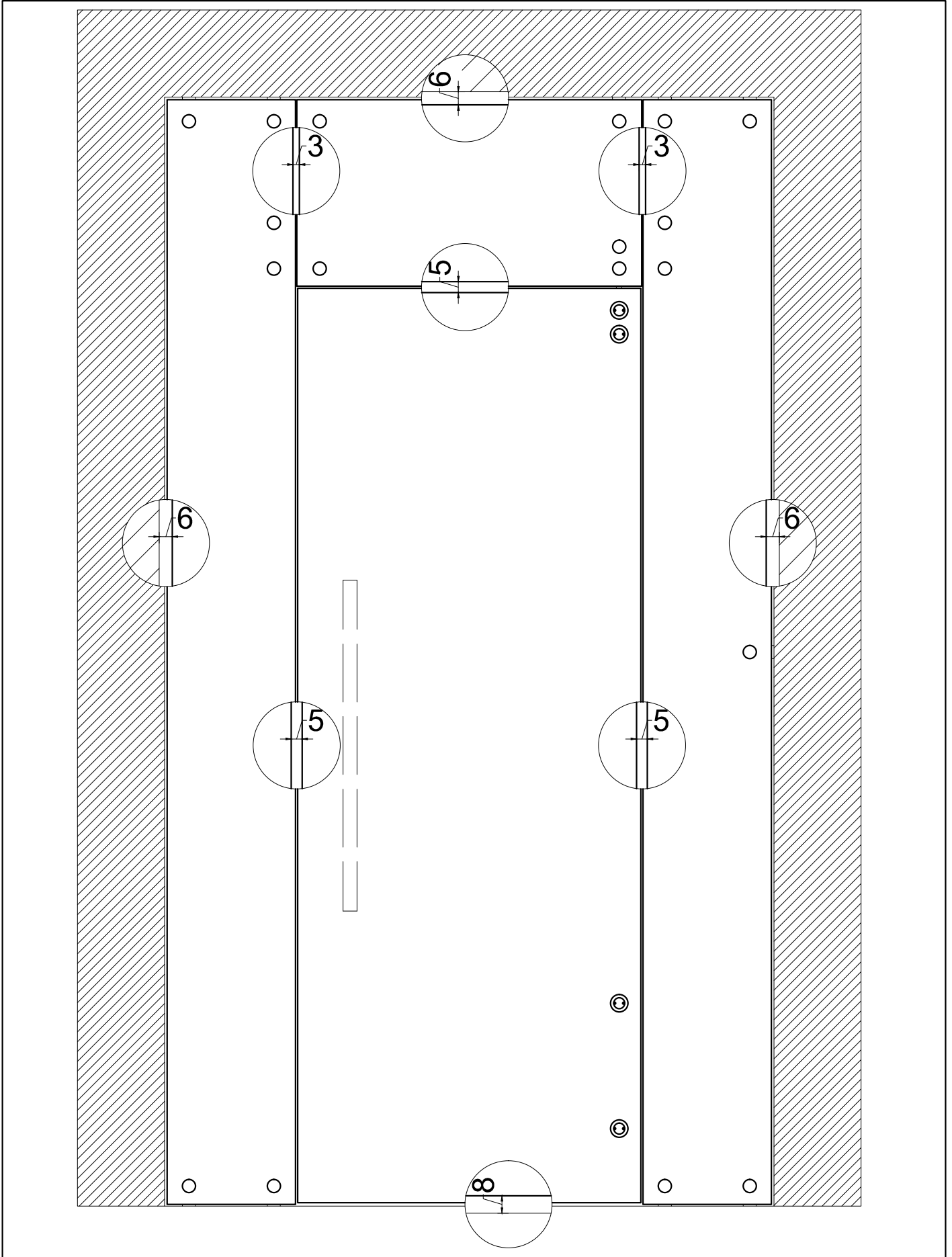
update 2.0
06/2018

GLASS DOOR WITH OVERPANEL AND SIDELIGHT R and L
solution SC5 A

Note: for installation of the glass door see instructions SC1 and SSC1

SC5-A.00

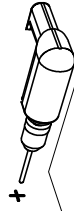
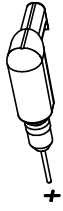
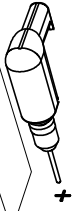
ZENITH SC5 - INSTALLATION INSTRUCTIONS
SINGLE GLASS DOOR WITH OVERPANEL
AND SIDELIGHT RIGHT AND LEFT - A -



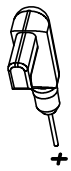
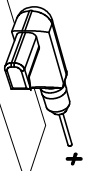
SC5-A.01

ZENITH SC5 - SINGLE GLASS DOOR WITH OVERPANEL AND
SIDELIGHT - A -

FRONT



BEHIND



SC5-A.02

ZENITH SC3 - BOTTOM HOLES FOR BRACKETS

FRONT

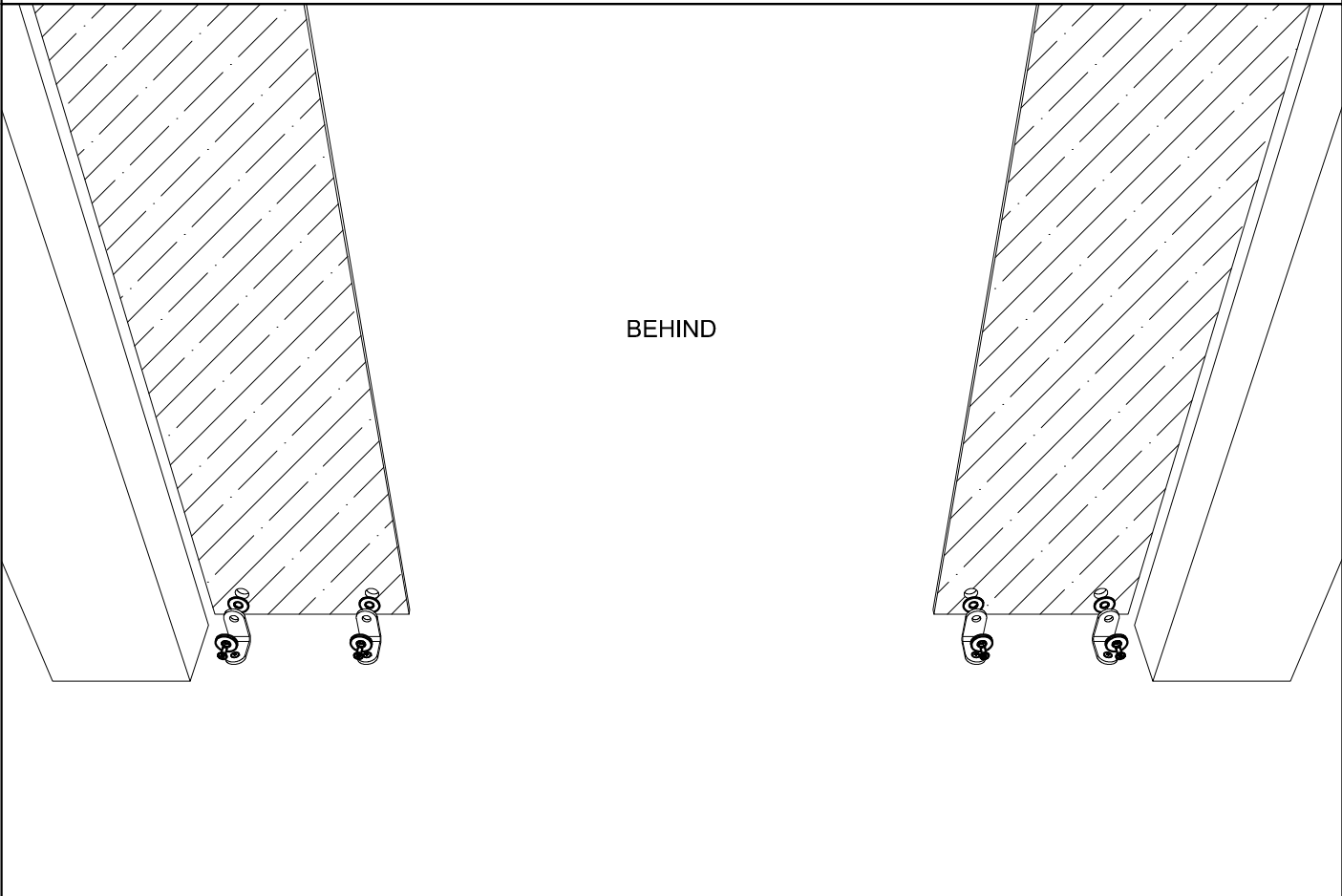
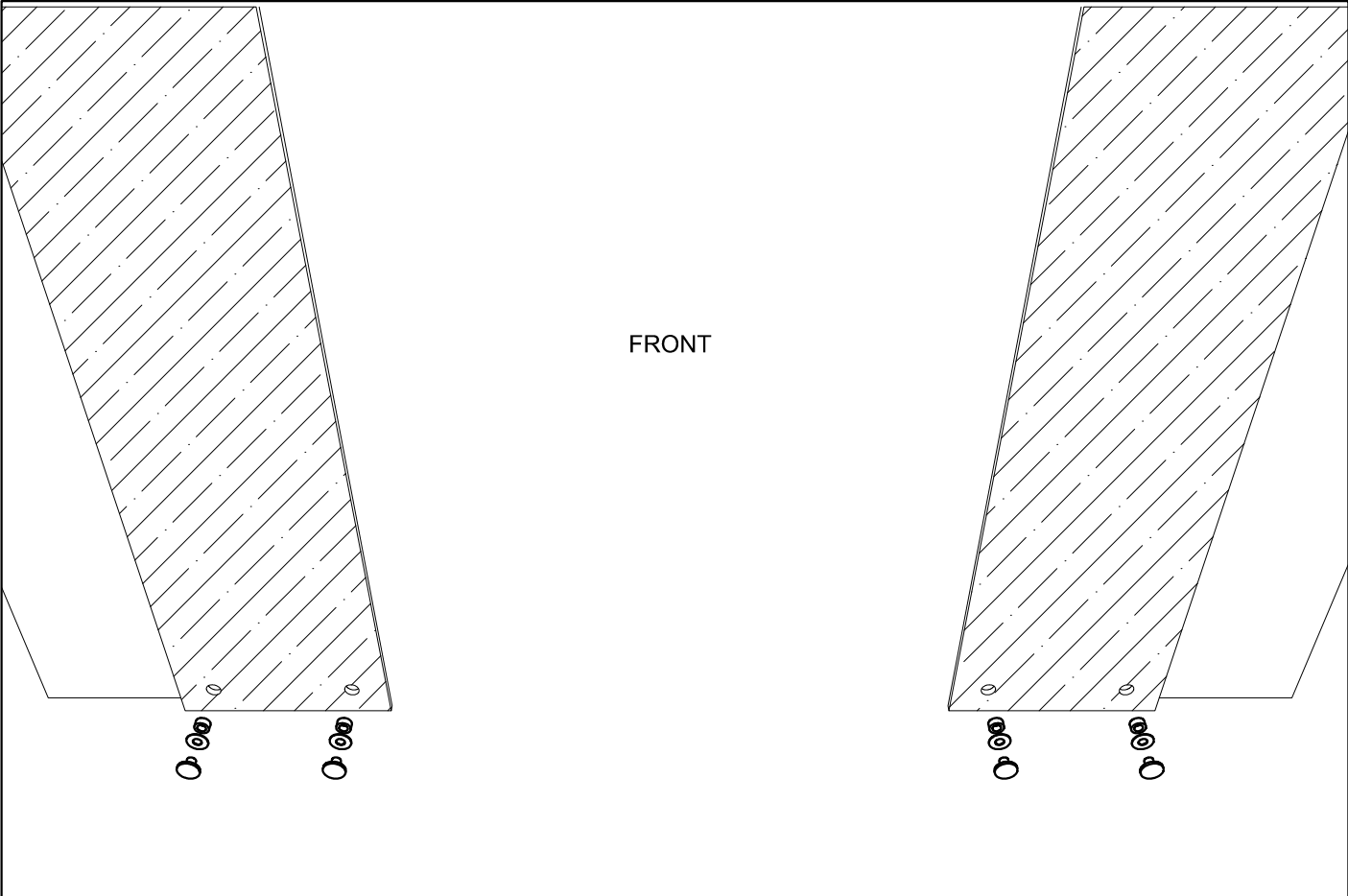


BEHIND

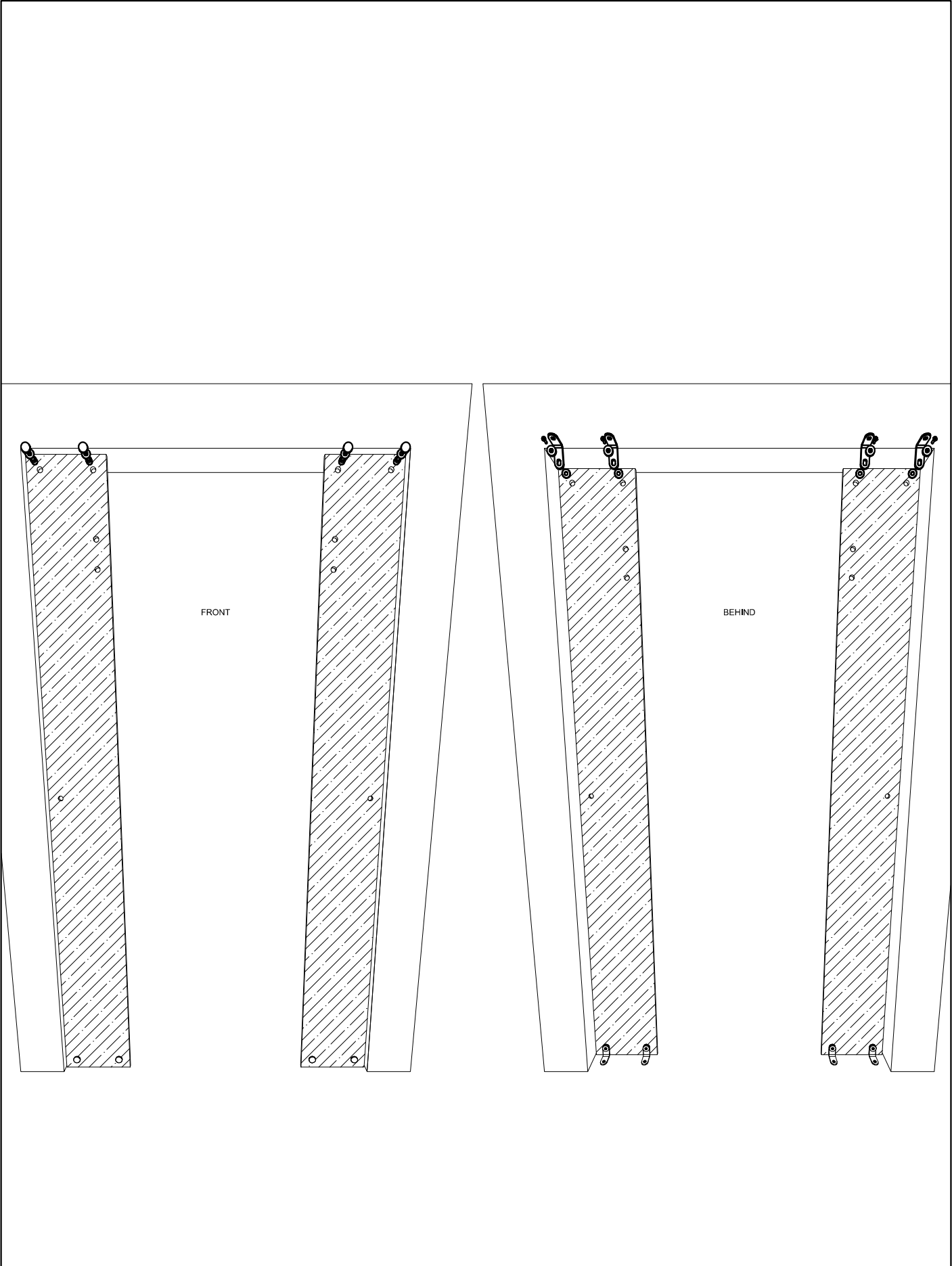


SC5-A.03

ZENITH SC5 - FIX THE BOTTOM BRACKETS

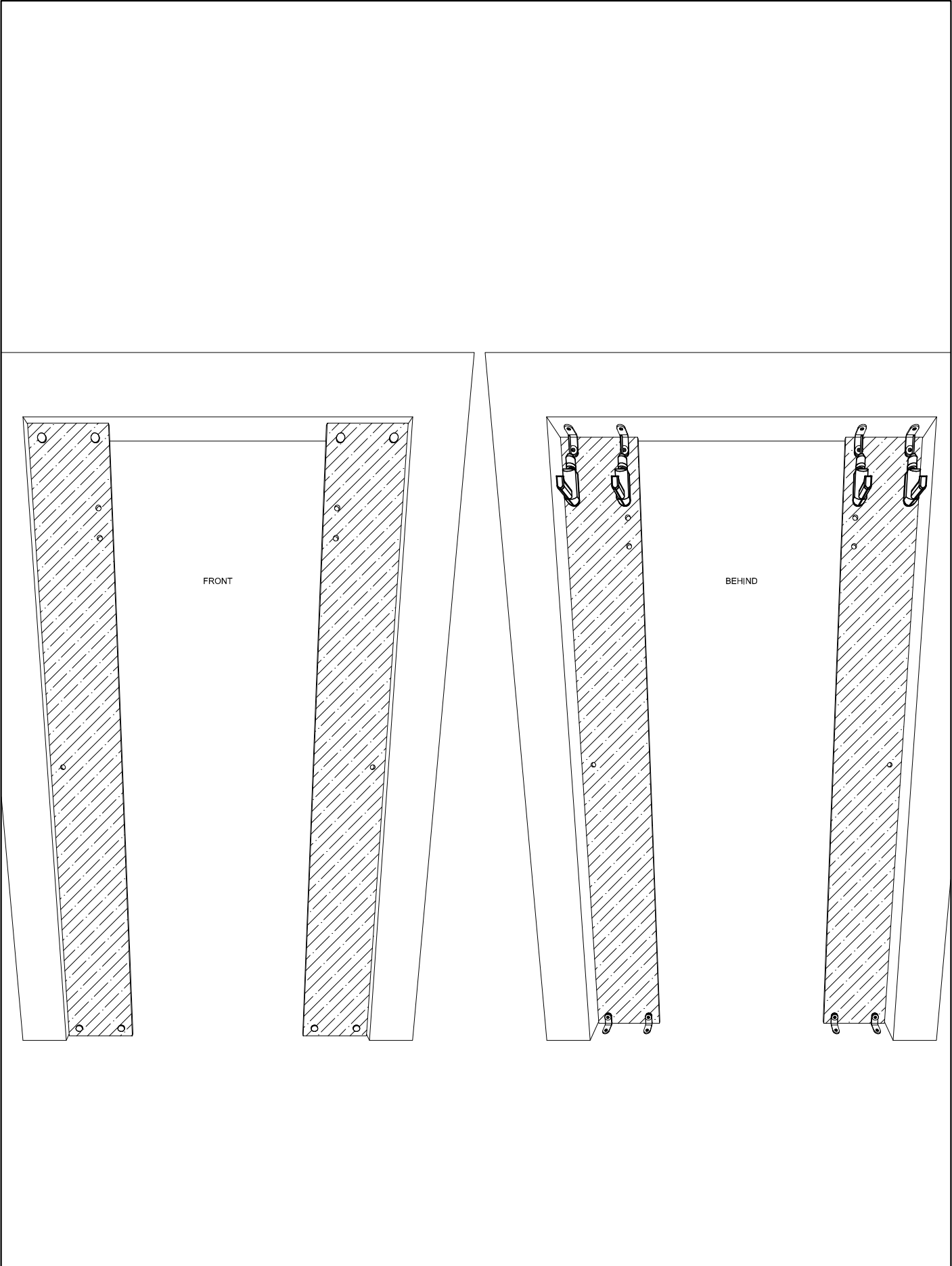


SC5-A.04	ZENITH SC5 - INSTALL THE SIDELIGHT
----------	------------------------------------



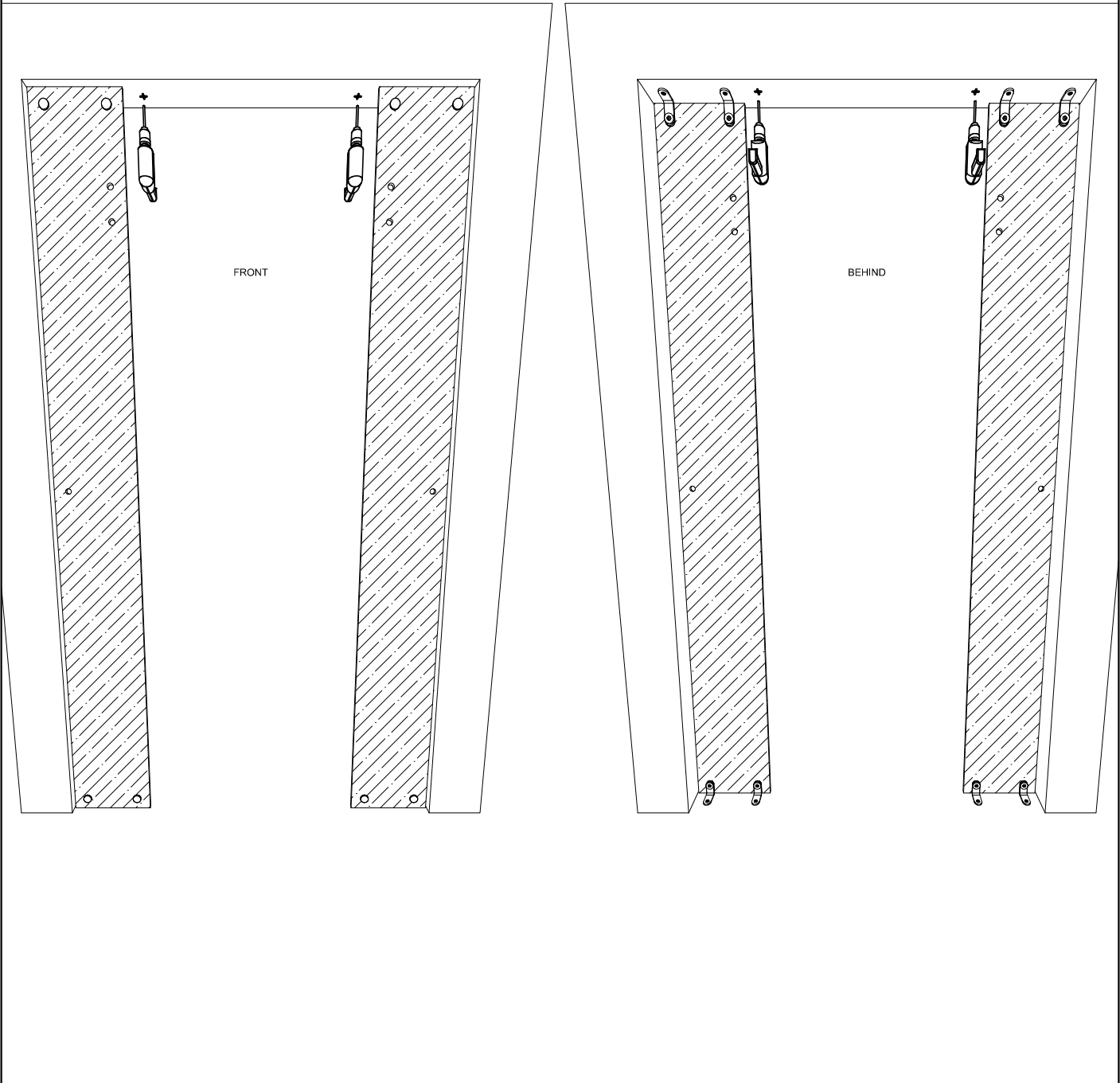
SC5-A.05

ZENITH SC5 - FIX THE TOP BRACKETS ON THE GLASS



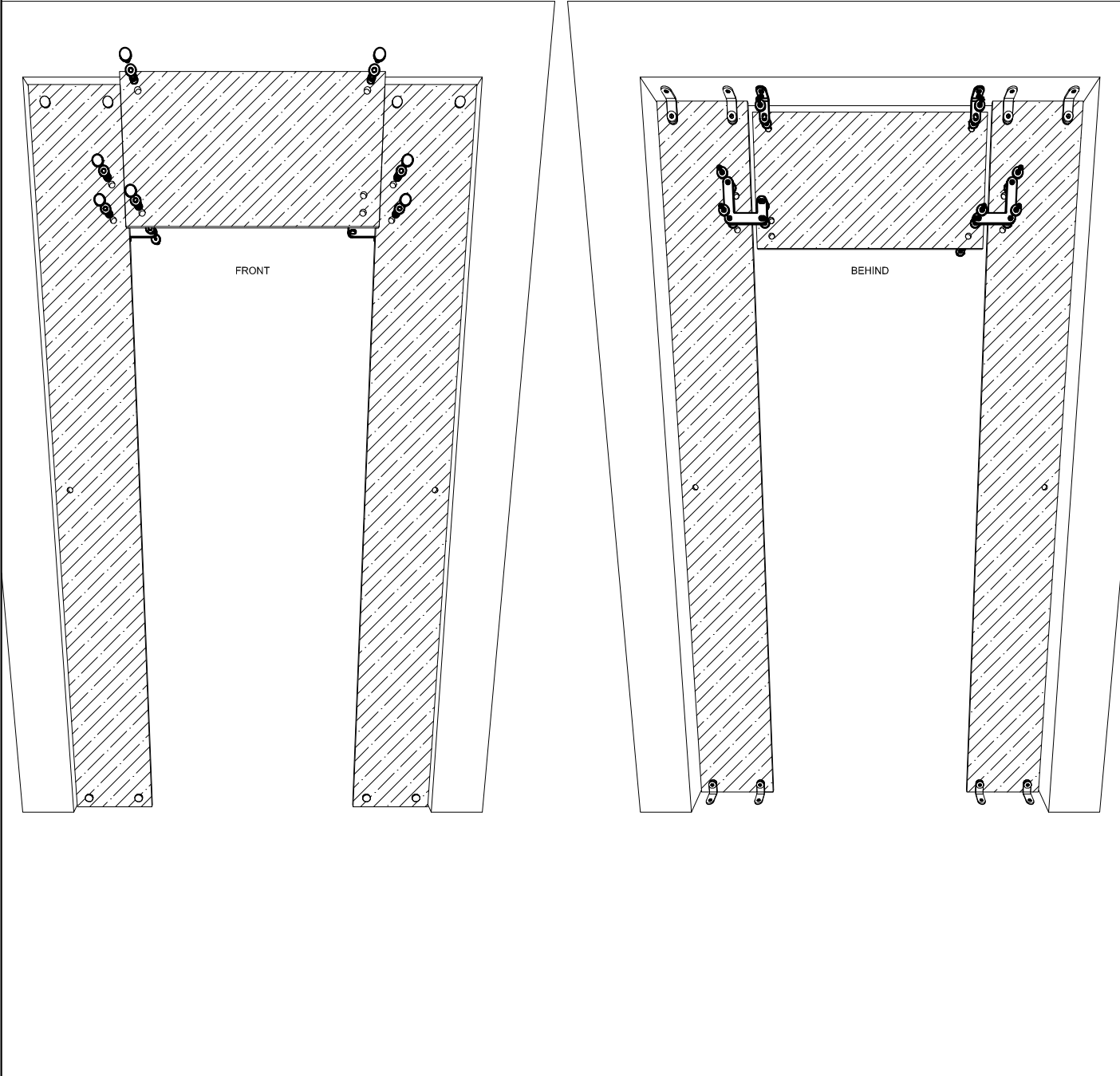
SC5-A.06

ZENITH SC5 - DRILL THE WALL AND FIX THE TOP BRACKETS



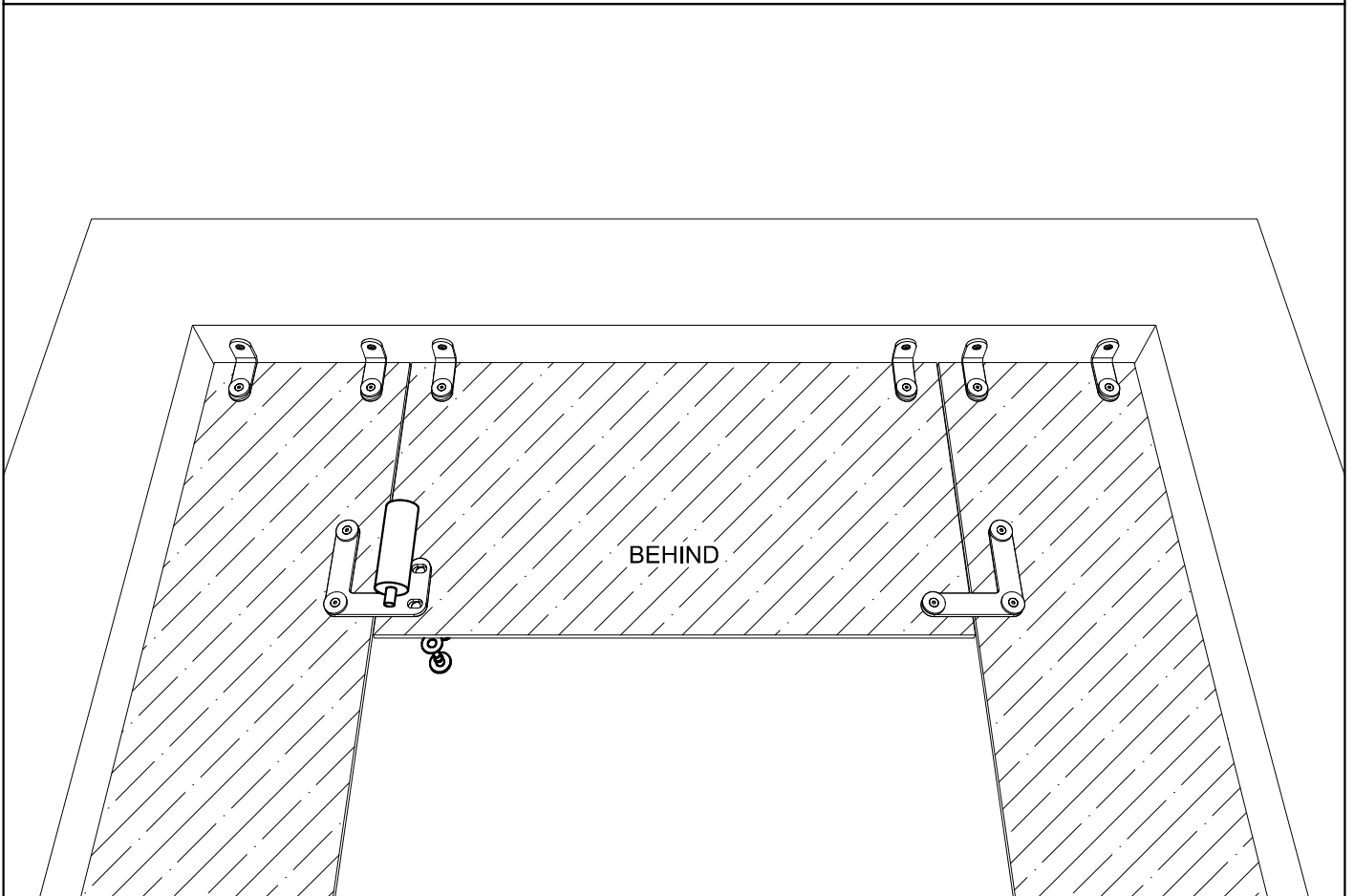
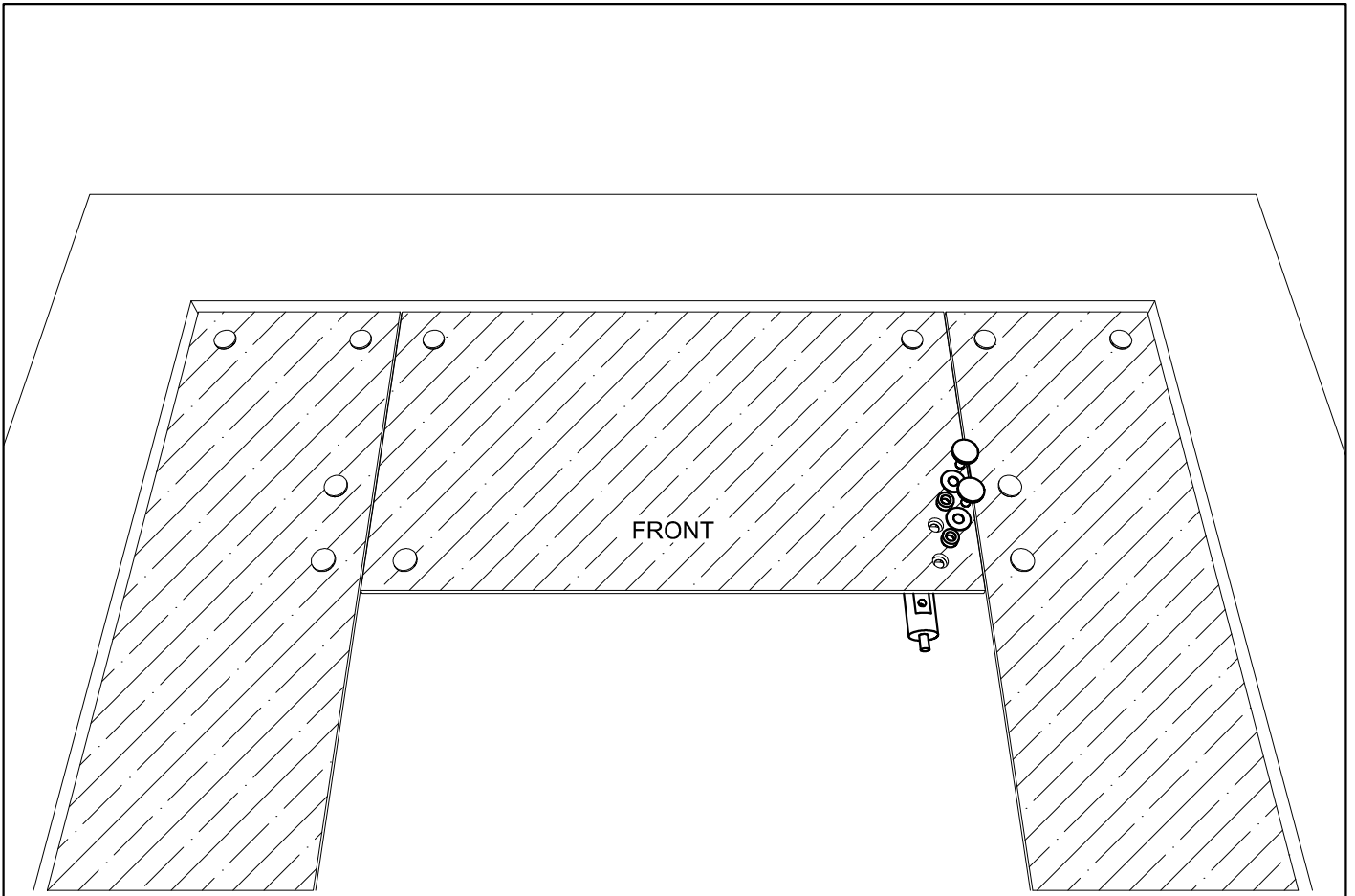
SC5-A.07

ZENITH SC5 - DRILL THE WALL AS INDICATED



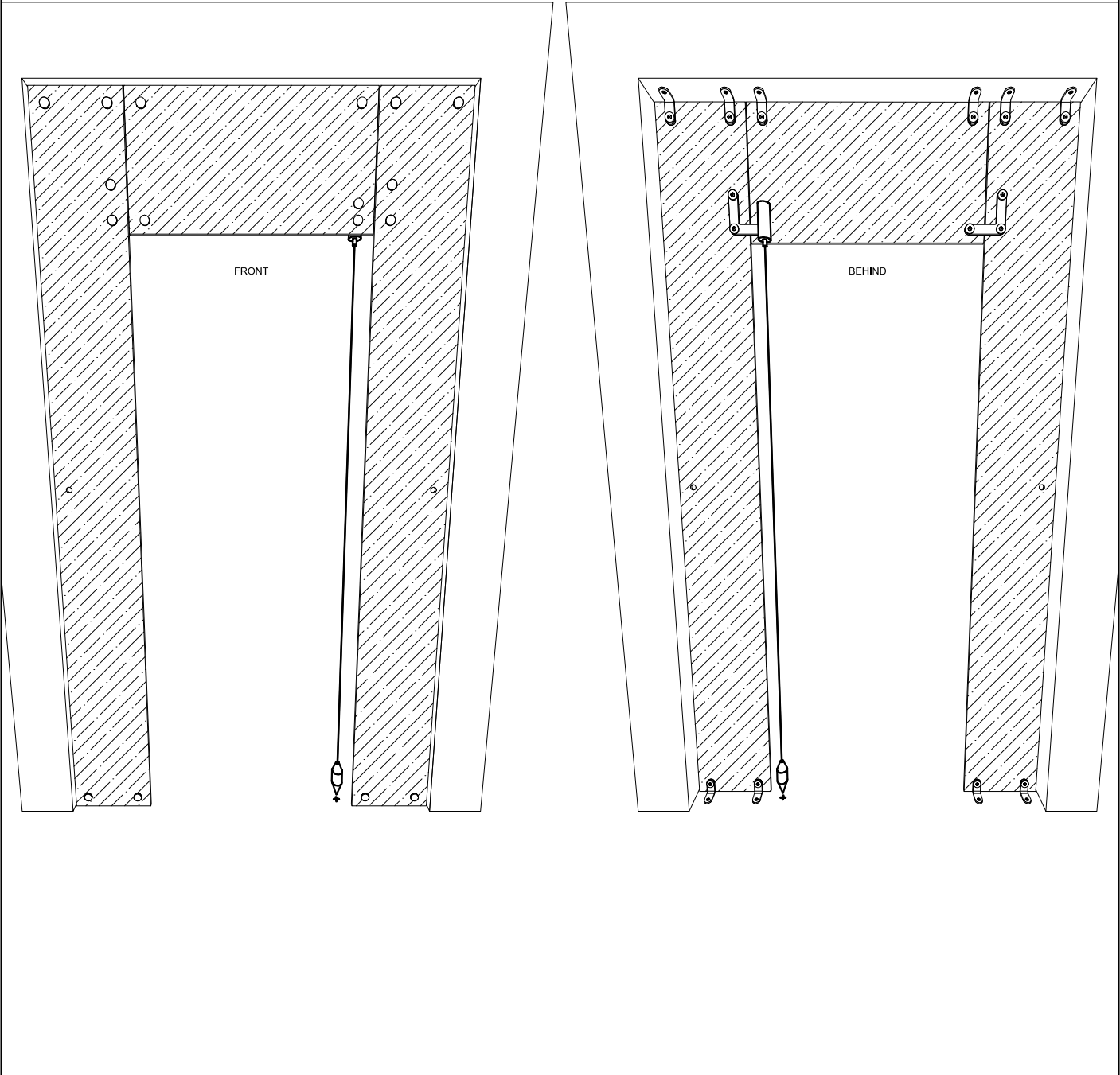
SC5-A.08

ZENITH SC5 - FIX THE BRACKETS AS INDICATED AND THE OVERPANEL



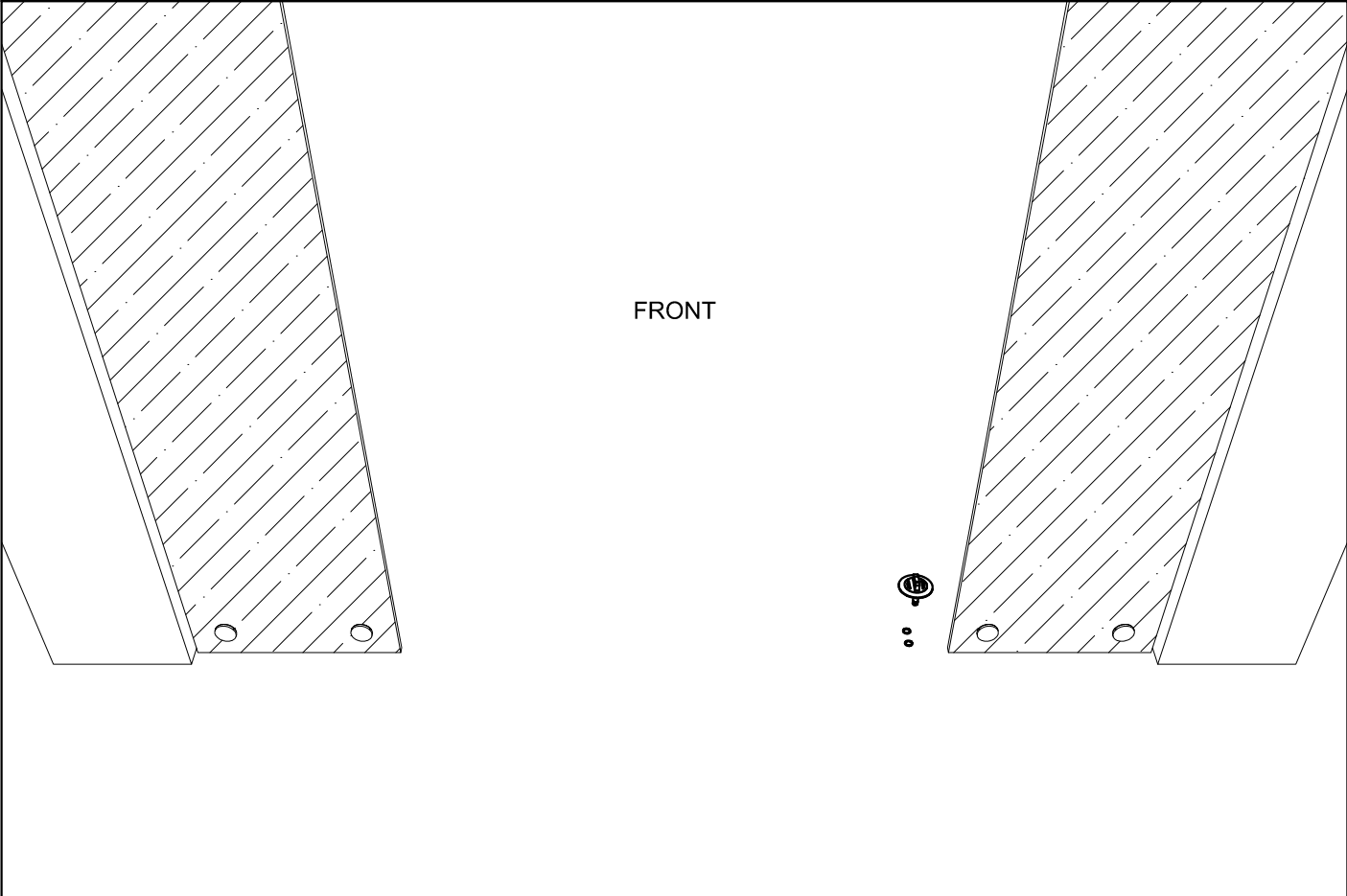
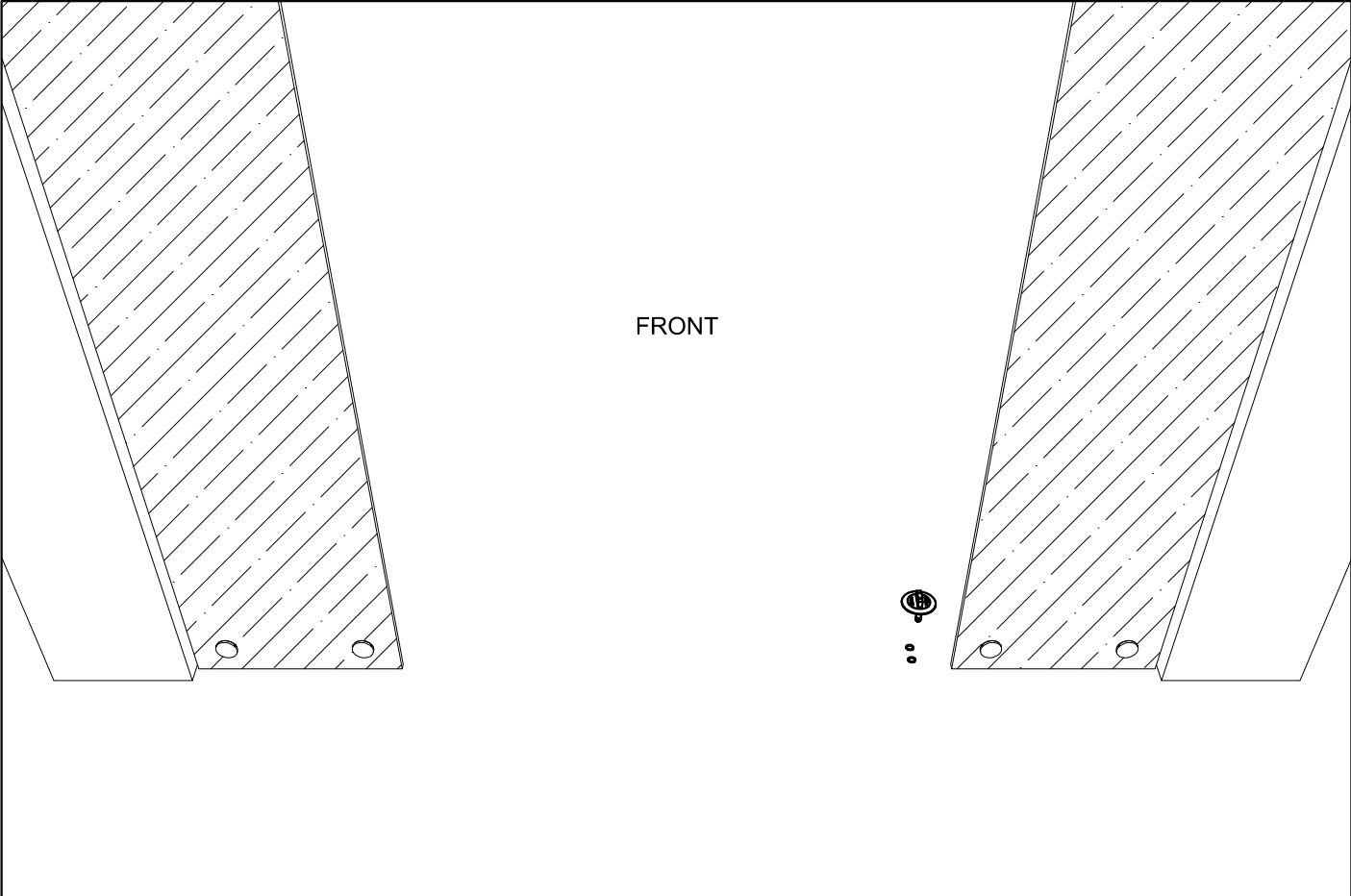
SC5-A.09

ZENITH SC5 - FIX THE INDICATED ACCESSORY



SC5-A.10

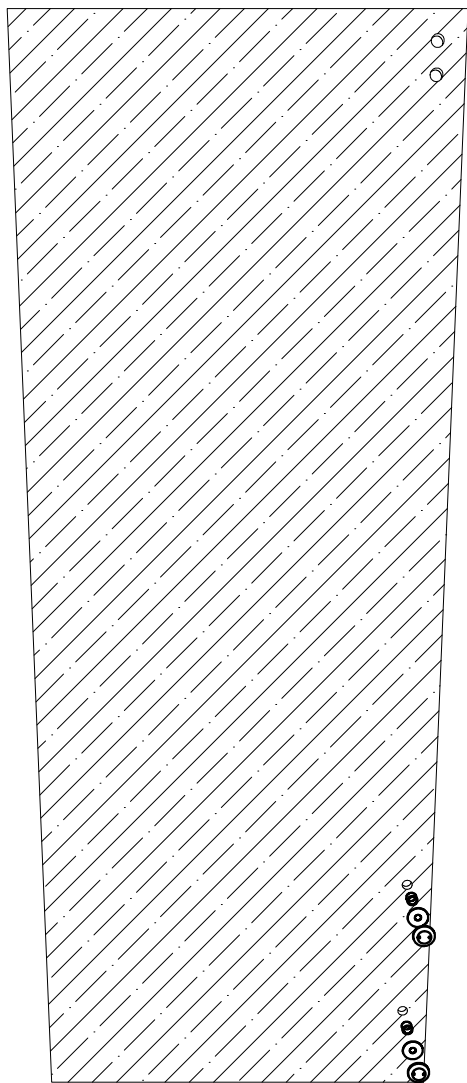
ZENITH SC5 - FIND THE CORRECT POSITION FOR THE DOOR CLOSER AS INDICATED



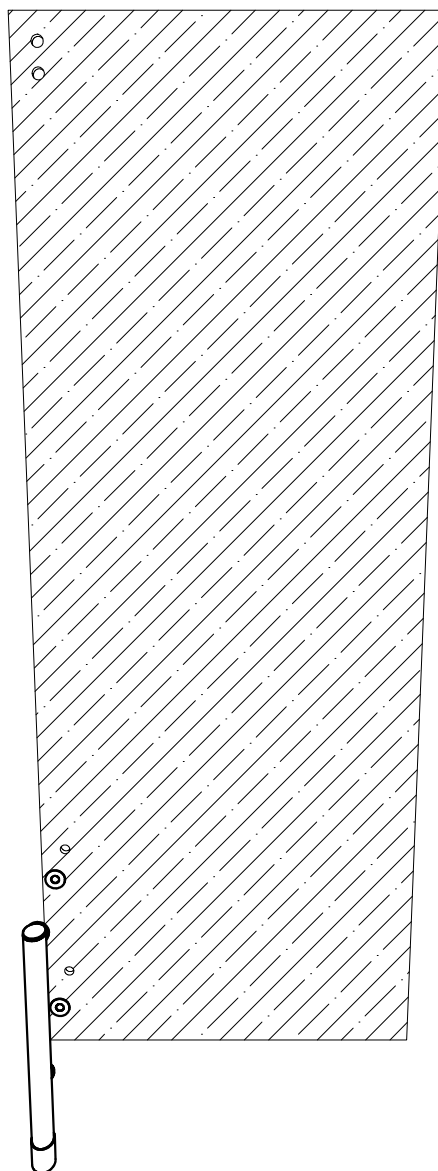
SC5-A.11

ZENITH SC5 -DRILL THE FLOOR AND ANCHOR THE
BOTTOM ACCESSORY

FRONT

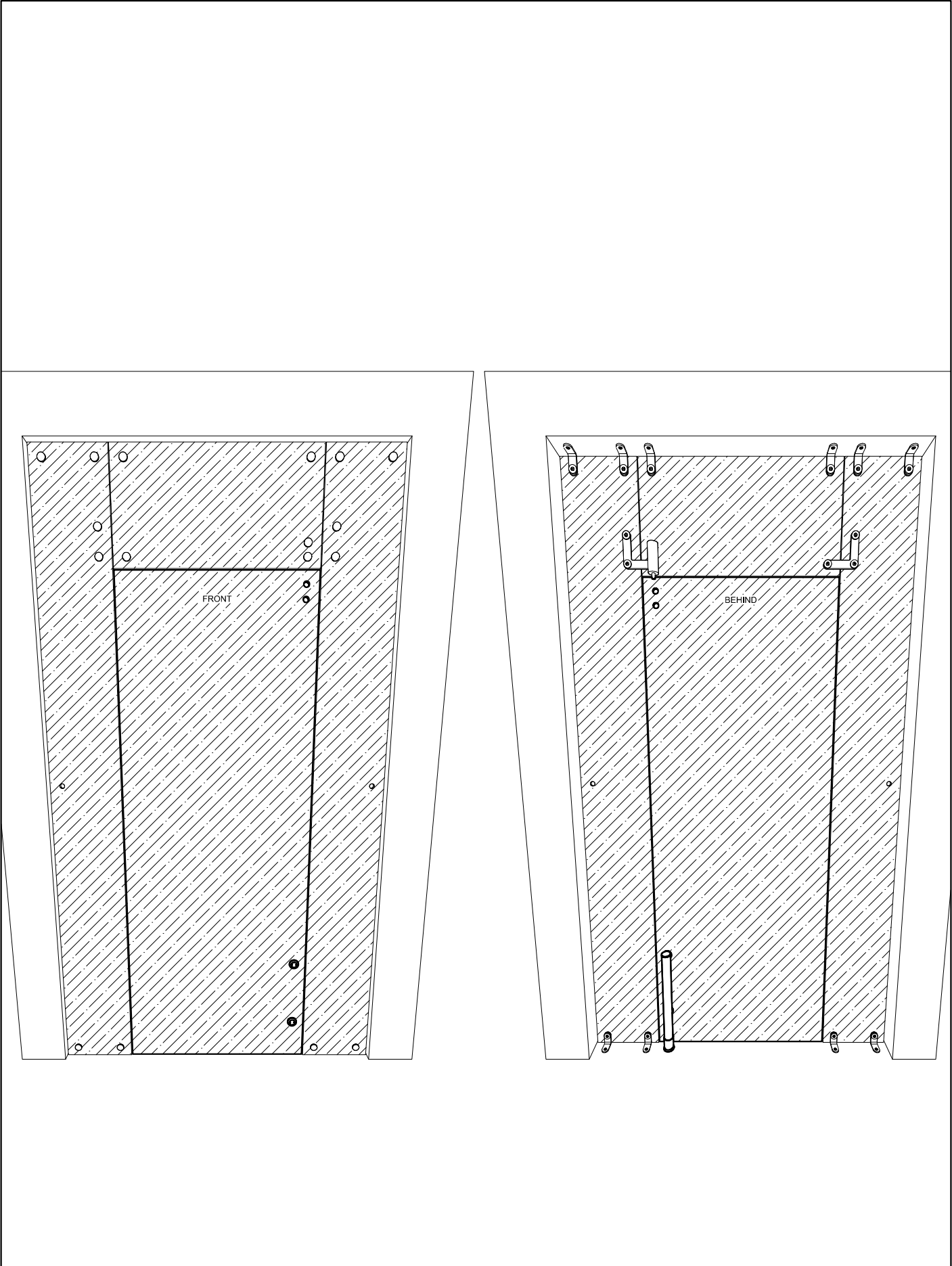


BEHIND



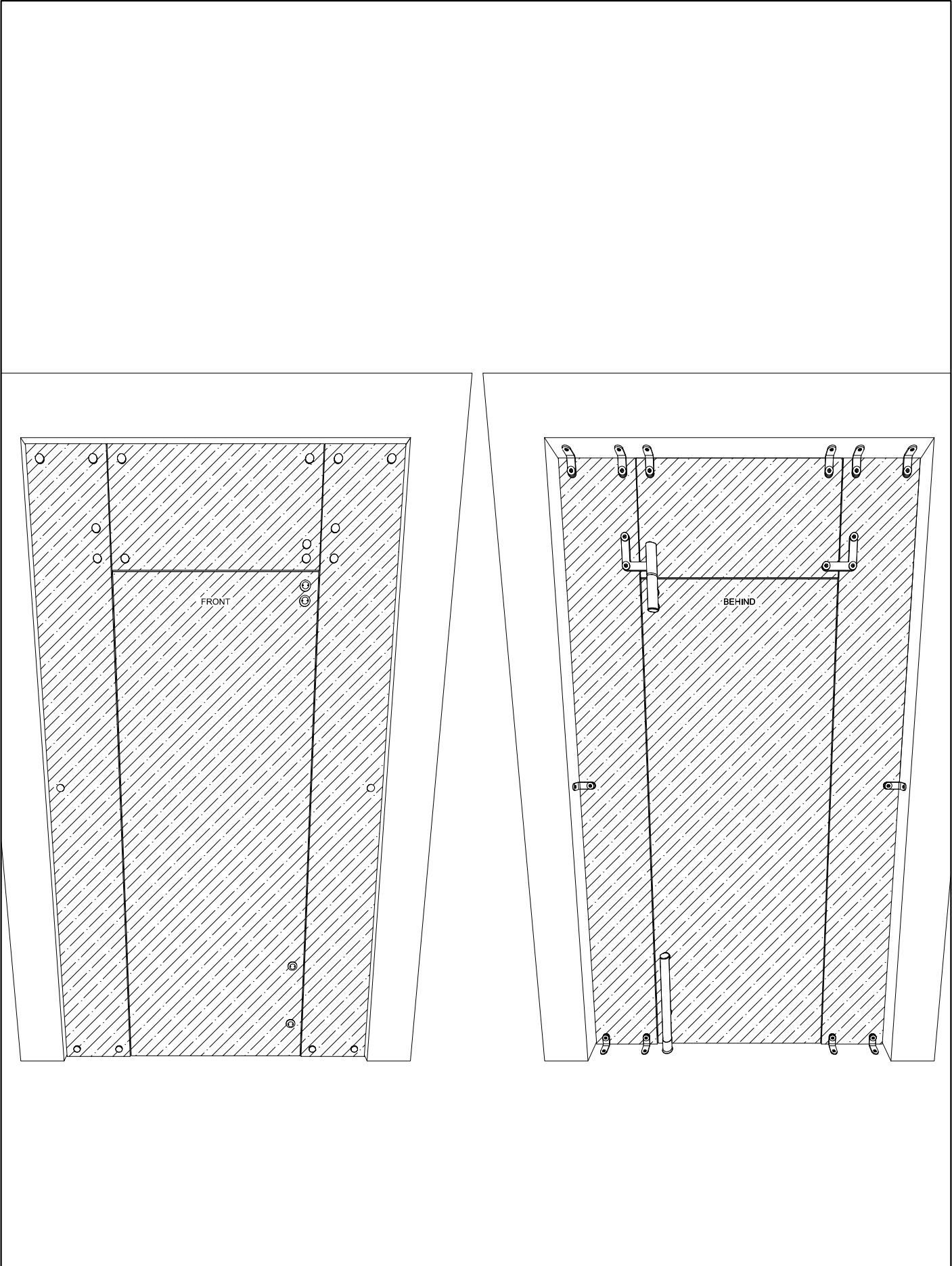
SC5-A.12

ZENITH SC5 - INSTALL THE DOOR CLOSER ON THE DOOR



SC5-A.13

ZENITH SC5 - INSTALL THE DOOR CLOSER ON THE DOOR



SC5-A.14

ZENITH SC5 - INSTALL THE REMAINING ACCESSORIES OF THE DOOR CLOSER AND THE WALL BRACKETS